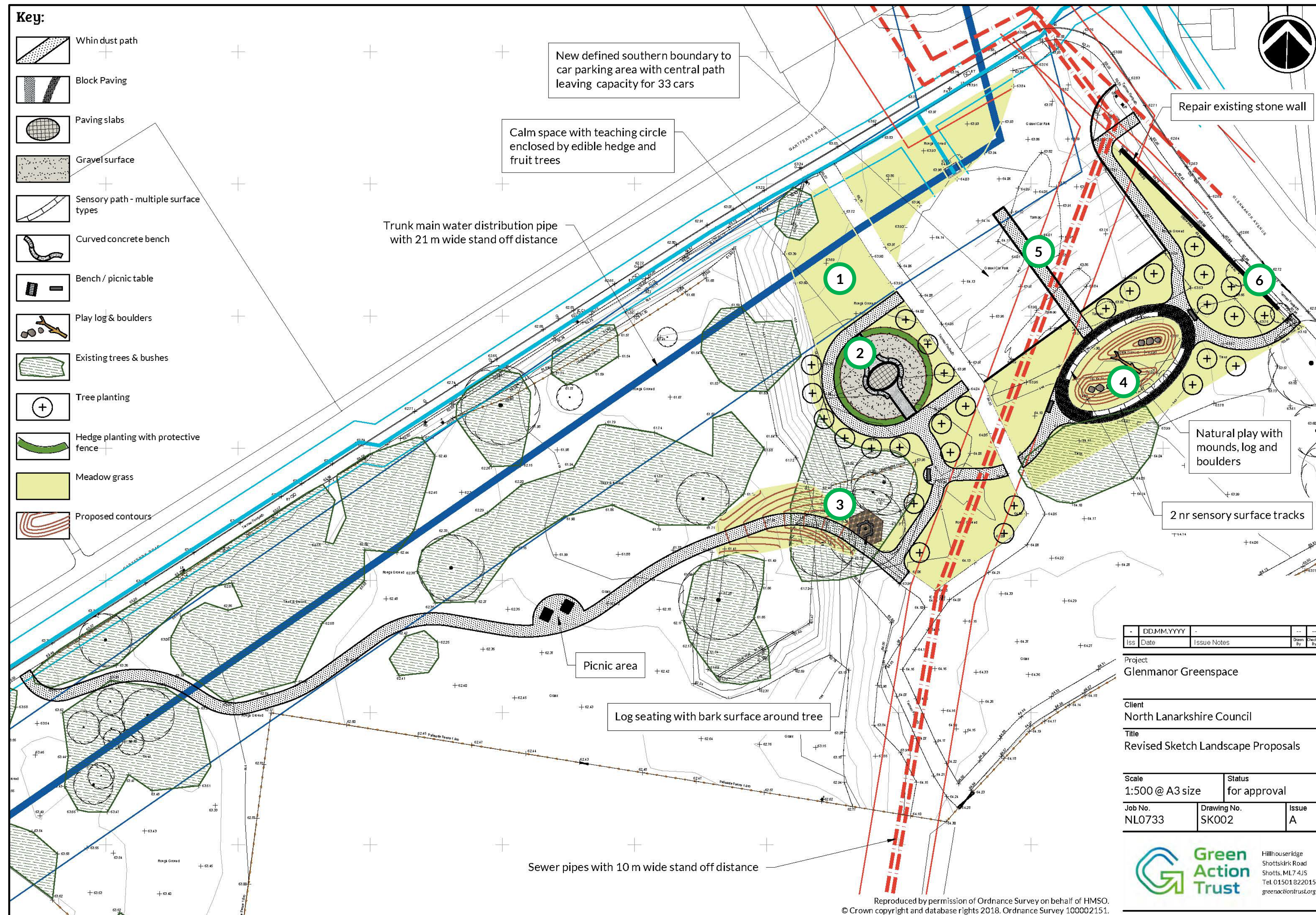


Glenmanor Greenspace Site Plan



All the thick scrub round the site will be replaced with meadow areas to create habitats for insects and birds with attractive flora in the growing season



A new teaching and seating location will be created surrounded by a hedge to create a calmer space.



The Base will stay and the ground cleared of rubble so that children have different places to visit and use when they go to the site from the school.

A totally new space will be created for outdoor play using boulders and logs and be surrounded by a sensory path that will be particularly enjoyed by children with special educational needs



The drop-off area will be formalised by defining the boundaries and creating a central path so children can get from cars onto a safe path wherever their parent/carer parks..



The derelict wall along Glenmanor Avenue will be repaired and strengthened so it is no longer a hazard